



IKARUS security.proxy Quickstart Guide

© 2011 IKARUS Security Software GmbH. All rights reserved

The information contained in this document represents the current view of IKARUS Security Software GmbH on the issues discussed as of the date of publication. Because IKARUS Security Software GmbH must respond to changing market conditions, it should not be interpreted to be a commitment on the part of IKARUS Security Software GmbH, and IKARUS cannot guarantee the accuracy of any information presented after the date of publication.

This paper is for informational purposes only. IKARUS Security Software GmbH **MAKES NO WARRANTIES, EXPRESS OR IMPLIED, IN THIS DOCUMENT.**

Other product and company names mentioned herein may be the trademarks of their respective owners.

IKARUS Security Software GmbH • Fillgradergasse 7 • 1060 Vienna • Austria

1 Document History

Version	Datum	Änderungen	Bearbeiter
0.5	14.01.2011	First Draft mit neuem Template	Natascha Chrobok Peter Duchek
0.6	10.03.2011	Windows installation update	Bianca Rostek
1.0	04.04.2011	Finalization	Peter Duchek

Tabelle 1: Document History

2 Table of Content

<u>1</u>	<u>DOCUMENT HISTORY</u>	<u>2</u>
<u>2</u>	<u>TABLE OF CONTENT</u>	<u>3</u>
<u>3</u>	<u>LIST OF ILLUSTRATIONS.....</u>	<u>4</u>
<u>4</u>	<u>GENERAL INFORMATION ON IKARUS SECURITY.PROXY.....</u>	<u>5</u>
4.1	INTRODUCTION / THREAD SZENARIO.....	5
4.2	IKARUS SECURITY.PROXY PRODUCT DETAILS.....	5
4.3	IKARUS SECURITY.PROXY FEATURE LIST	6
<u>5</u>	<u>INSTALLATION</u>	<u>7</u>
5.1	REQUIREMENTS	7
5.2	INSTALLING ON MICROSOFT WINDOWS SYSTEMS	8
5.2.1	INSTALLING OF IKARUS SECURITY.PROXY.....	8
5.2.2	INSTALLING OF IKARUS SECURITY.PROXY CONFIGURATION CENTER	15
5.3	INSTALLING ON A LINUX SYSTEM	24
5.4	LICENSING	24
5.5	STOPPING AND STARTING THE SERVICE.....	24
5.5.1	ON MICROSOFT WINDOWS SYSTEMS.....	24
5.5.2	ON LINUX.....	24
5.6	USING IKARUS SECURITY.PROXY	25

3 List of Illustrations

Image 1 – Installing of security.proxy Language	8
Image 2 - Installing of security.proxy Welcome.....	9
Image 3 - - Installing of security.proxy License Agreement	10
Image 4 – Installing of security.proxy Installation Directory.....	11
Image 5 – Installing of security.proxy Installation.....	12
Image 6 – Installing of security.proxy Licensing.....	13
Image 7 – Installing of security.proxy Done	14
Image 8 – Installing of security.proxy CC Language.....	15
Image 9 – Installing of security.proxy CC Welcome.....	16
Image 10 – Installing of security.proxy CC License Agreement	17
Image 11 – Installing of security.proxy CC Requirements.....	18
Image 12 – Installing of security.proxy CC Installation Directory.....	19
Image 13 – Installing of security.proxy CC Start menu	20
Image 14 – Installing of security.proxy CC Confirming the Installation.....	21
Image 15 – Installing of security.proxy CC Installation.....	22
Image 16 – Installing of security.proxy CC Done	23

4 General Information on IKARUS security.proxy

4.1 Introduction / Threat Szenario

Today, any business not providing data exchange over the Internet is practically without a chance in its market. Whether you are an SMB, a global player, an educational or public institution, or even an ISP, you will almost certainly depend on a functioning Internet connection in your day-to-day work. The prevalence of the World Wide Web leads us to take it for granted; on the other hand, we tend to forget that its predominant tools – e-mail and the Internet – are the preferred gateways of malware attacks. During the next years, those attacks will become more frequent and increasingly sophisticated. Worse still, businesses inadvertently contribute to the spread of hazardous malware by letting their employees freely visit infected web sites, download files from remote locations, or even send files from the company network to the Internet. The effects on the network infrastructures are often substantial: spam keeps slowing down the servers. This puts valuable data at significant risk, wastes employees' precious work time, and also generates avoidable costs.

You need efficient gateway protection to ensure successful Internet communication; otherwise, your network will be defenseless against cyber attacks.

4.2 IKARUS security.proxy Product Details

IKARUS security.proxy is a software-based content-security solution. It integrates into your internal network with minimum effort and can be implemented on the gateway level. The solution is designed for protecting small businesses with a limited number of users as well as large enterprises with several thousand clients.

Thanks to its unlimited compatibility, **IKARUS security.proxy** can be used in combination with any firewall. Installation packages are available for Microsoft Windows and Linux (RPM package). The **IKARUS security.proxy** versions for Microsoft Internet Security & Acceleration (ISA) Server and Microsoft Threat Management Gateway (TMG) are highly innovative: They allow for transparently integrating the comprehensive feature set of our content-security solution with MS ISA/TMG Server.

All versions of **IKARUS security.proxy** are also available as turnkey solutions on SecureGUARD appliances.

4.3 IKARUS security.proxy Feature List

For a complete and updated list of **IKARUS security.proxy** features, visit the IKARUS website (www.ikarus.at).

Key features include:

- Built-in IKARUS AntiVirus ScanEngine
- Virus protection for web protocols (HTTP, FTP over HTTP, FTP) and mail protocols (SMTP, IMAP, POP3, NNTP)
- IKARUS AntiSPAM Engine protecting mail protocols (SMTP, IMAP, POP3, NNTP)
- Simple creation of access profiles from URL, file, and content-type lists
- Access control using IP-address groups
- Supports various authentication types: basic proxy authentication, LDAP authentication, MS ISA authentication
- Fully automated incremental update (every 10 minutes) for antivirus, anti-spam, and URL-filter databases as well as the IKARUS ScanEngine and the IKARUS AntiSPAM Engine
- Custom creation of administrative access levels
- Comprehensive logging of all activities
- Setup packages for Microsoft Windows and Linux

5 Installation

5.1 Requirements

Make sure that your system meets the following requirements before starting the **IKARUS security.proxy** installation:

- ✓ The user ID used for installing the system has administrative rights
- ✓ The system clock has the correct setting
- ✓ The network settings of the operating system (including the IP address, routing/default-gateway, and DNS settings) have been configured properly
- ✓ The system has sufficient free disk space
- ✓ The default ports of IKARUS security.proxy (TCP 8080, TCP 2100, TCP 15639) are available
- ✓ The firewall allows the transmission of the necessary protocols (HTTP, HTTPS, POP3, IMAP, NNTP, and SMTP) from inside the system
- ✓ The firewall allows for data reception on the required ports (management port: TCP 15639; web-proxy port: TCP 8080)
- ✓ The IKARUS security.proxy setup file appropriate for the OS (32-bit or 64-bit) is available
- ✓ An IKARUS security.proxy trial or full license is available

5.2 Installing on Microsoft Windows Systems

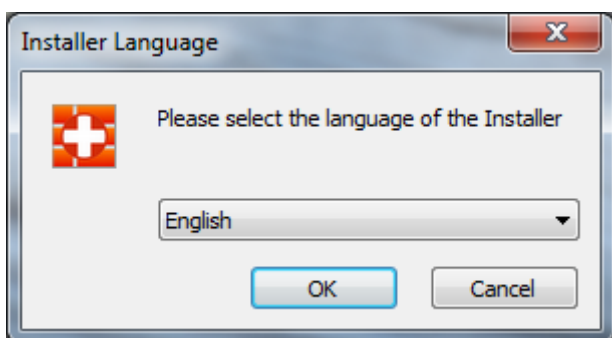
Installing IKARUS security.proxy on a Microsoft Windows system is straightforward. Double-clicking the setup file will install IKARUS security.proxy on your system. Simply follow the instructions provided by the wizard.

5.2.1 Installing of IKARUS security.proxy

5.2.1.1 Language

Select your desired setup language.

Image 1 – Installing of security.proxy Language



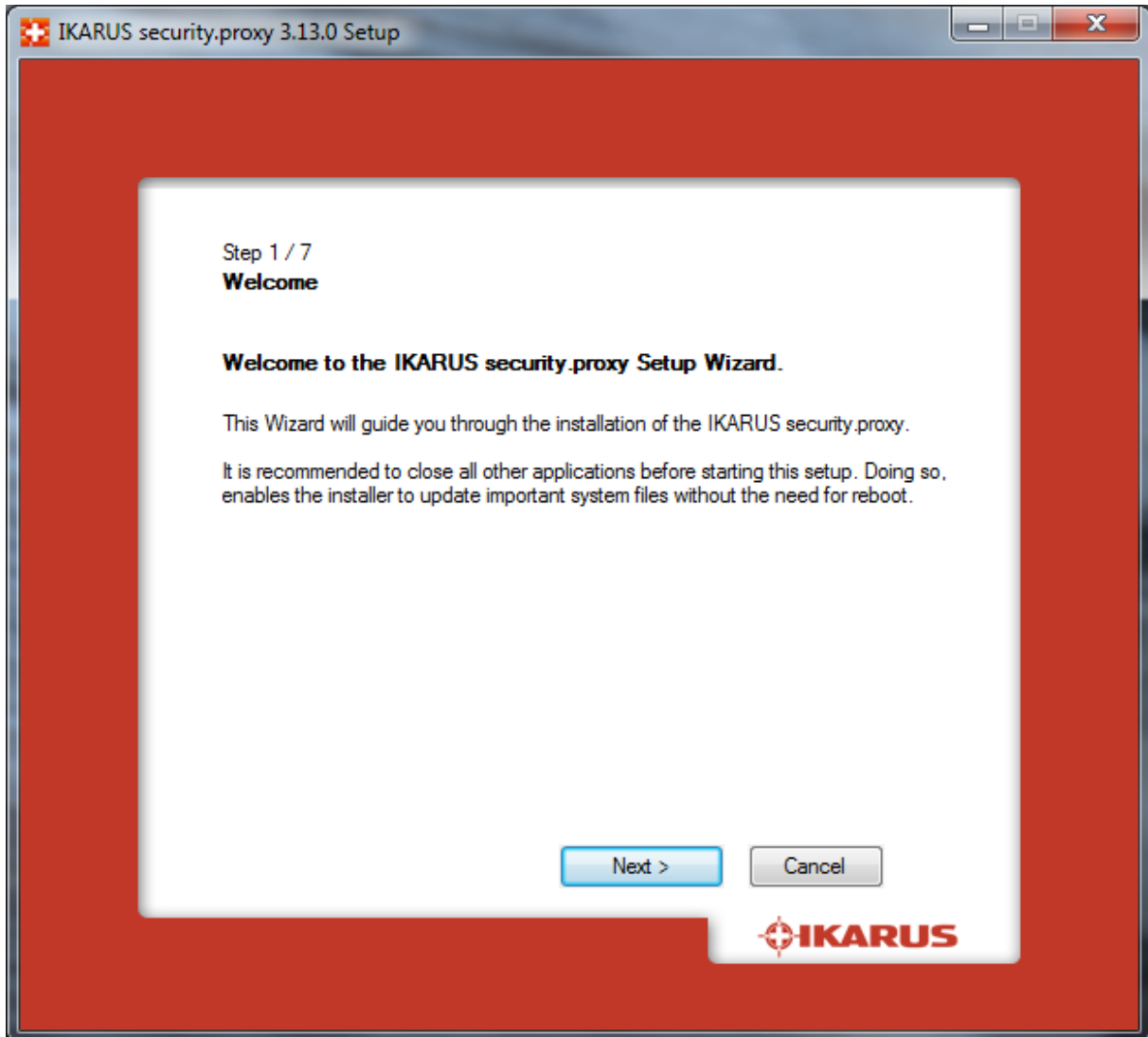
5.2.1.2 Update-Installation

If **IKARUS security.proxy** is already installed on your system, Setup will offer you to perform an update.

5.2.1.3 Step 1: Welcome

The Welcome screen. Click "Next".

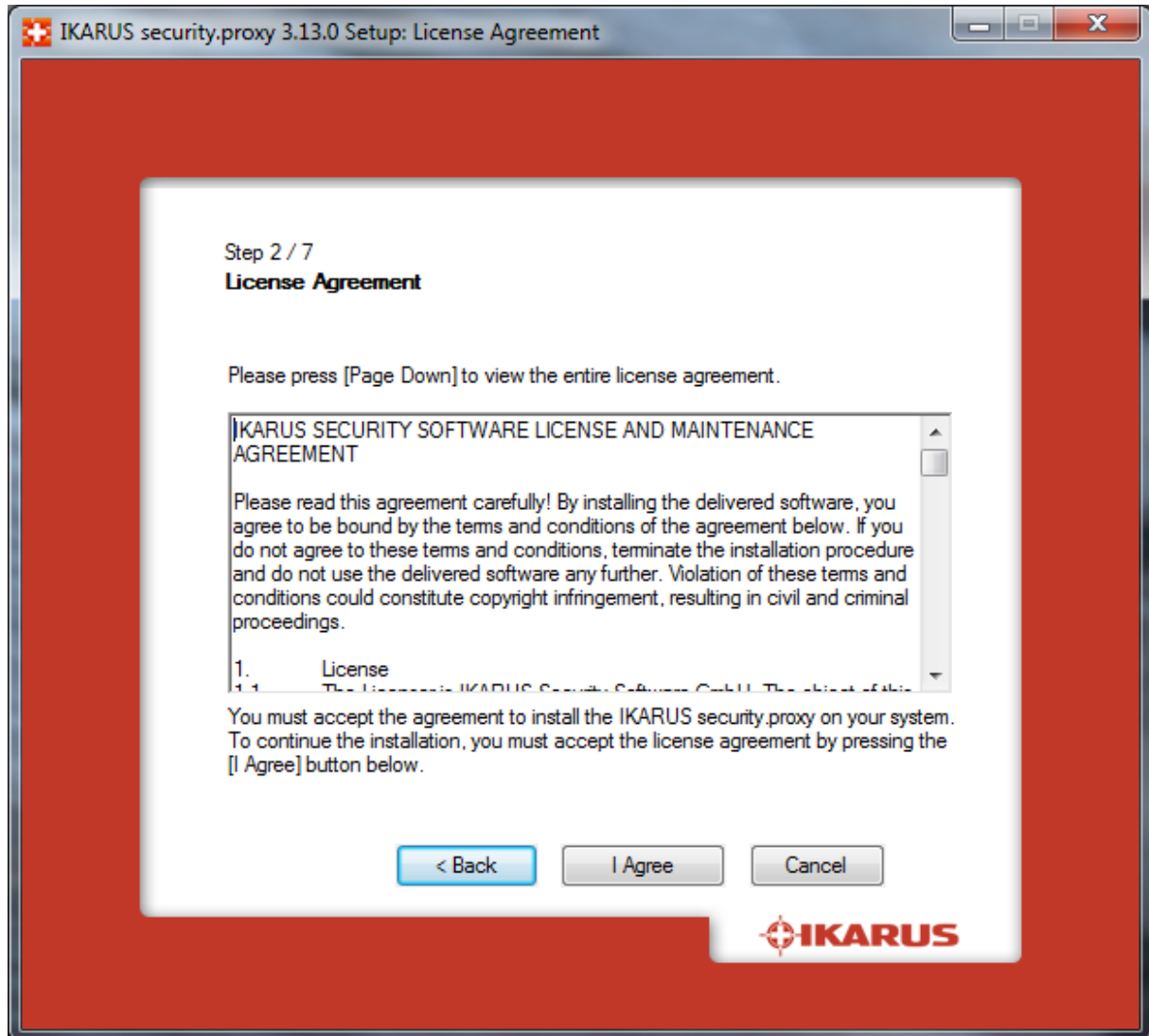
Image 2 - Installing of security.proxy Welcome



5.2.1.4 Step 2: License Agreement

Click "Accept" to accept the terms of the license agreement.

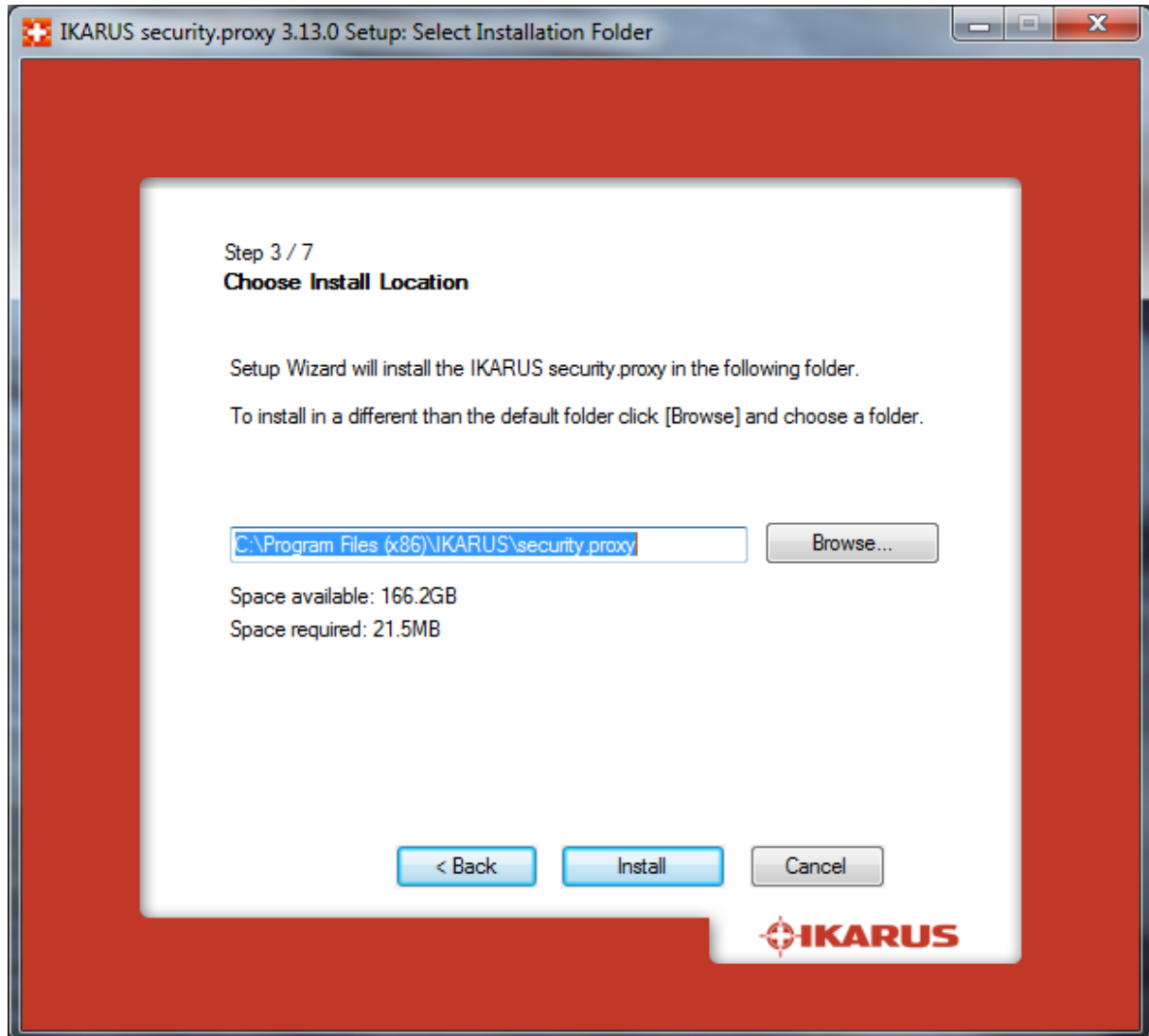
Image 3 - - Installing of security.proxy License Agreement



5.2.1.5 Step 3: Installation Directory

Next, select the **IKARUS security.proxy** installation directory by either using the default location or entering a different one. Click “Next”.

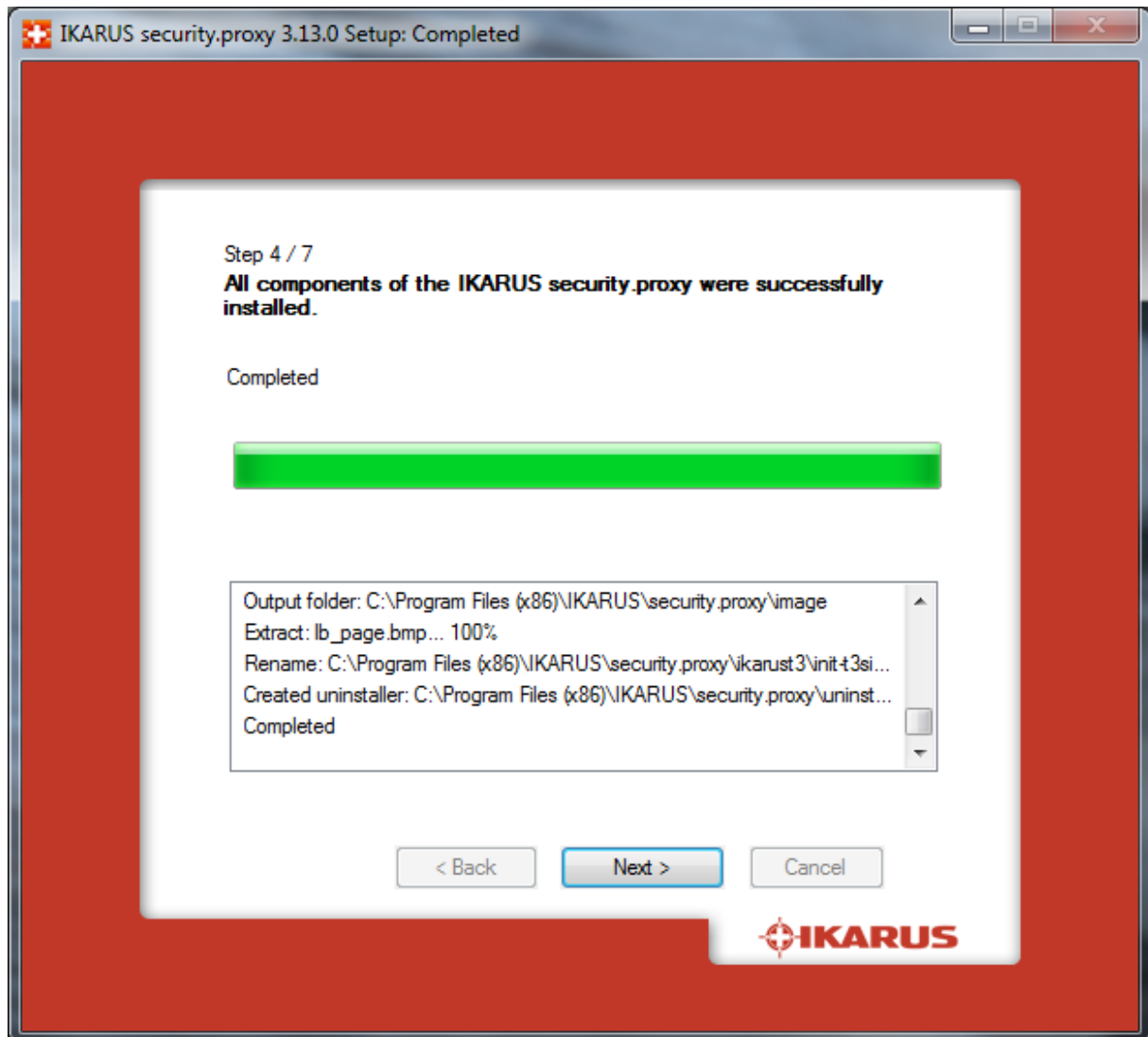
Image 4 – Installing of security.proxy Installation Directory



5.2.1.6 Step 4: Installation

The **IKARUS security.proxy** installation starts. Setup will install all necessary files on your system. Click “Next”.

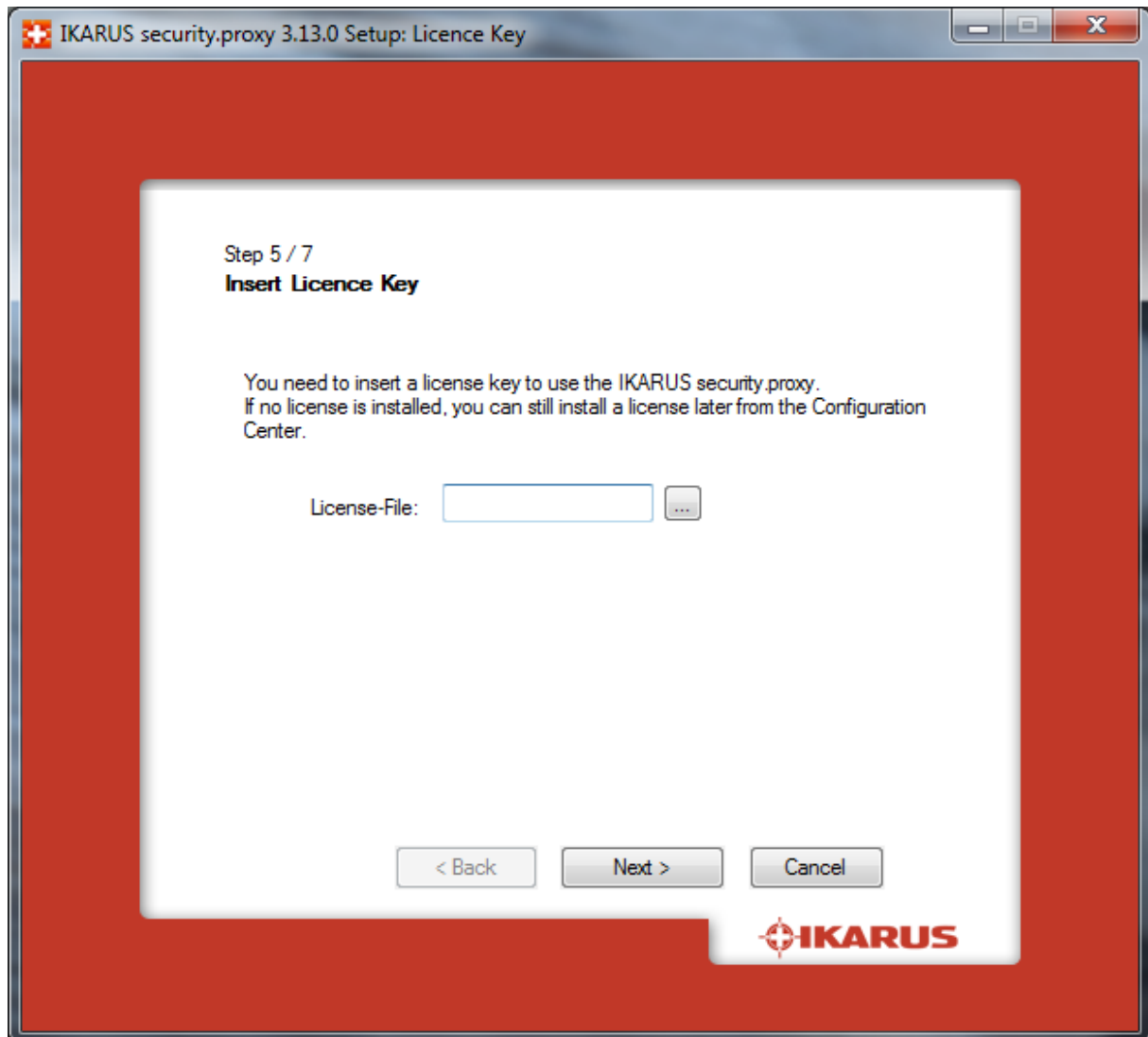
Image 5 – Installing of security.proxy Installation



5.2.1.7 Step 5: Licensing

At this time, you can enable your **IKARUS security.proxy** license. Alternatively, you can skip this step and enable the license at later time.

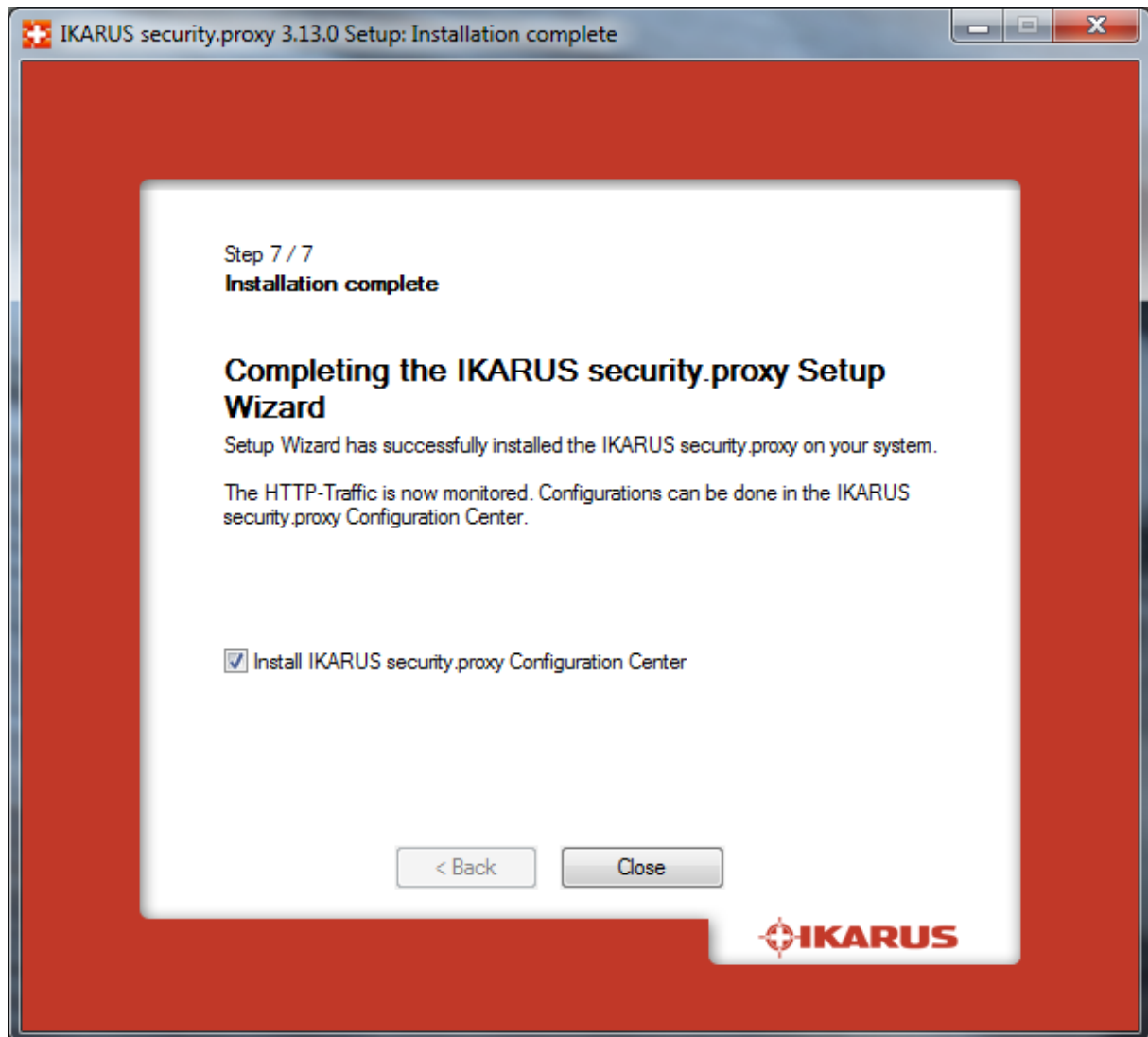
Image 6 – Installing of security.proxy Licensing



5.2.1.8 Step 7: Done

IKARUS security.proxy was successfully installed. We recommend you to install the **IKARUS security.proxy Configuration Center** now.

Image 7 – Installing of security.proxy Done

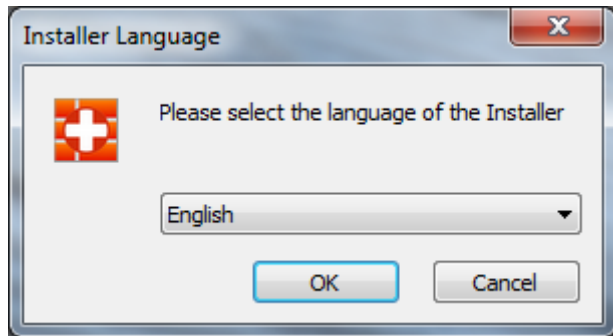


5.2.2 Installing of IKARUS security.proxy Configuration Center

5.2.2.1 Language

Select your desired setup language.

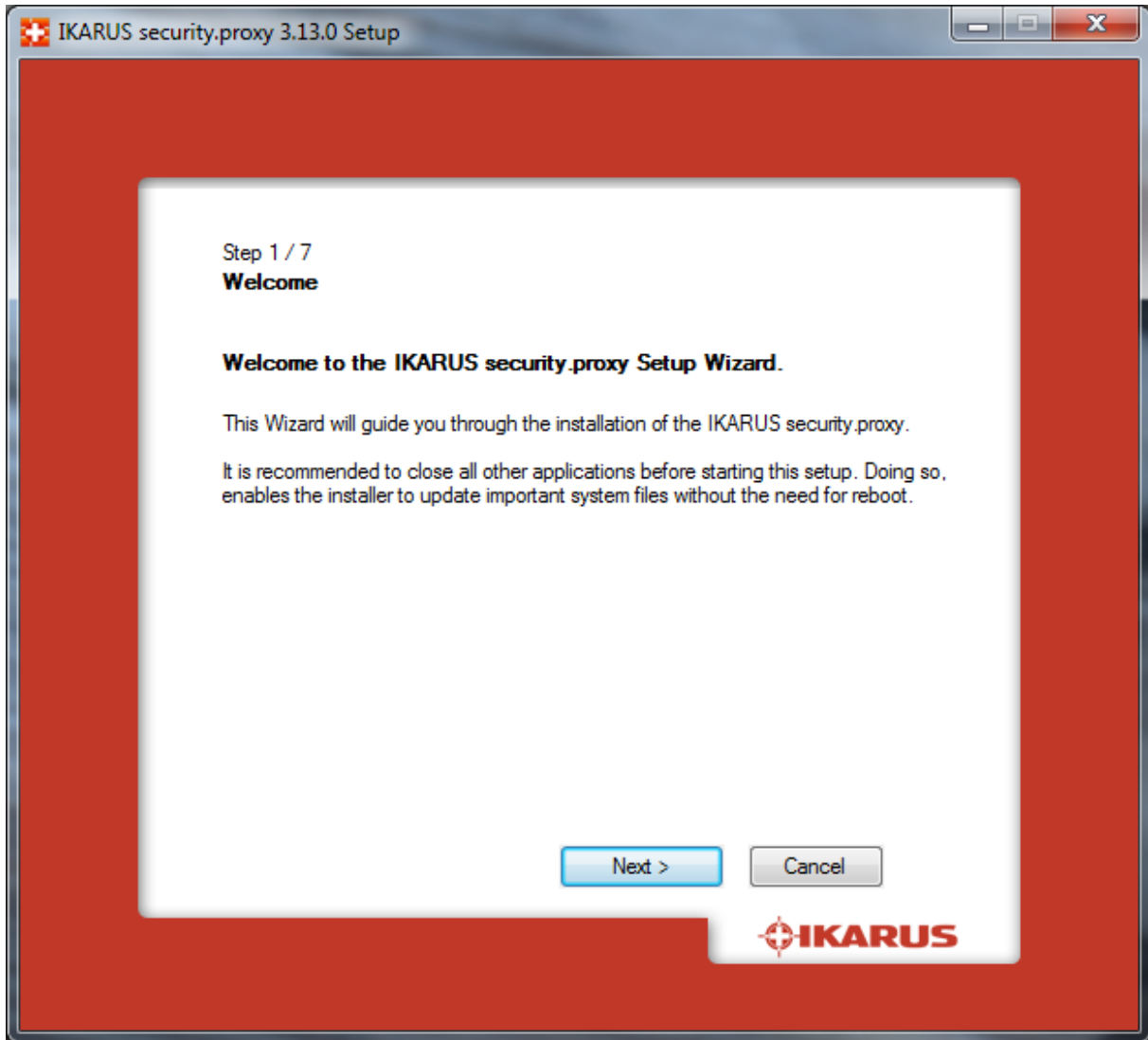
Image 8 – Installing of security.proxy CC Language



5.2.2.2 Step 1: Welcome

The Welcome screen. Click "Next".

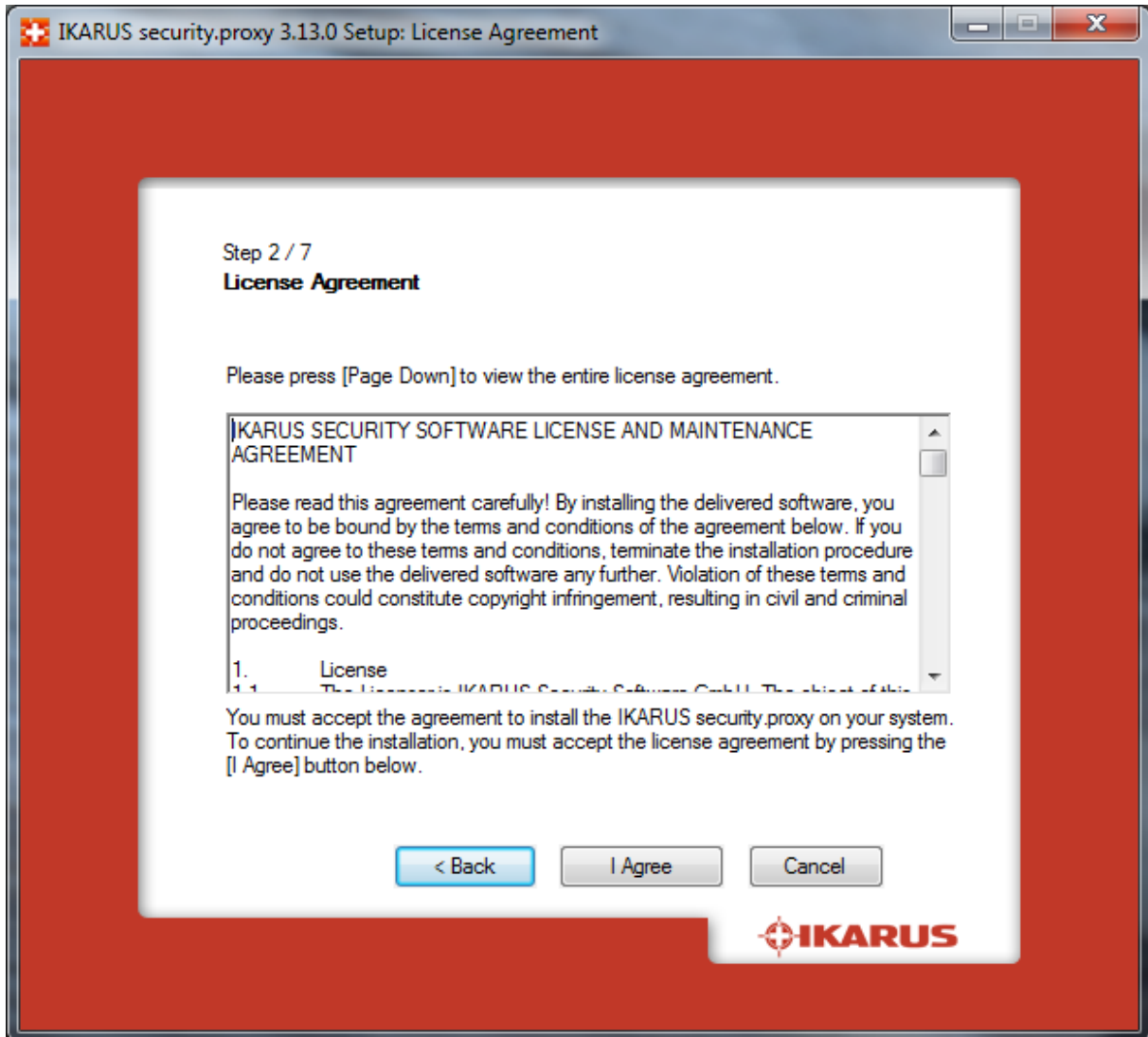
Image 9 – Installing of security.proxy CC Welcome



5.2.2.3 Step 2: License Agreement

Click “Accept” to accept the terms of the license agreement.

Image 10 – Installing of security.proxy CC License Agreement

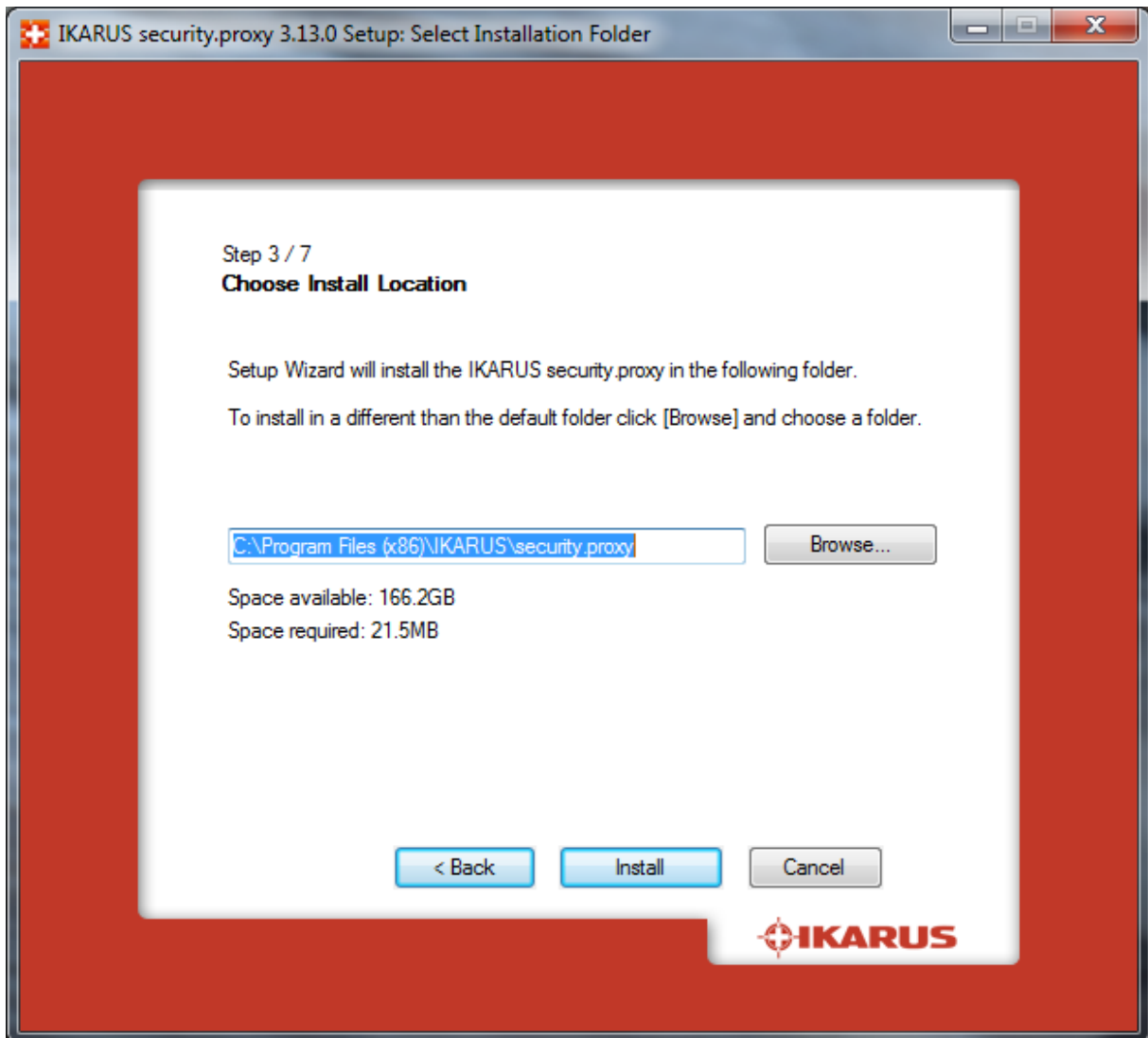


5.2.2.4 Step 3: Requirements

Setup will check whether your system meets all **IKARUS security.proxy Configuration Center** installation requirements.

The installation program will suggest to uninstall any legacy versions found on the system.

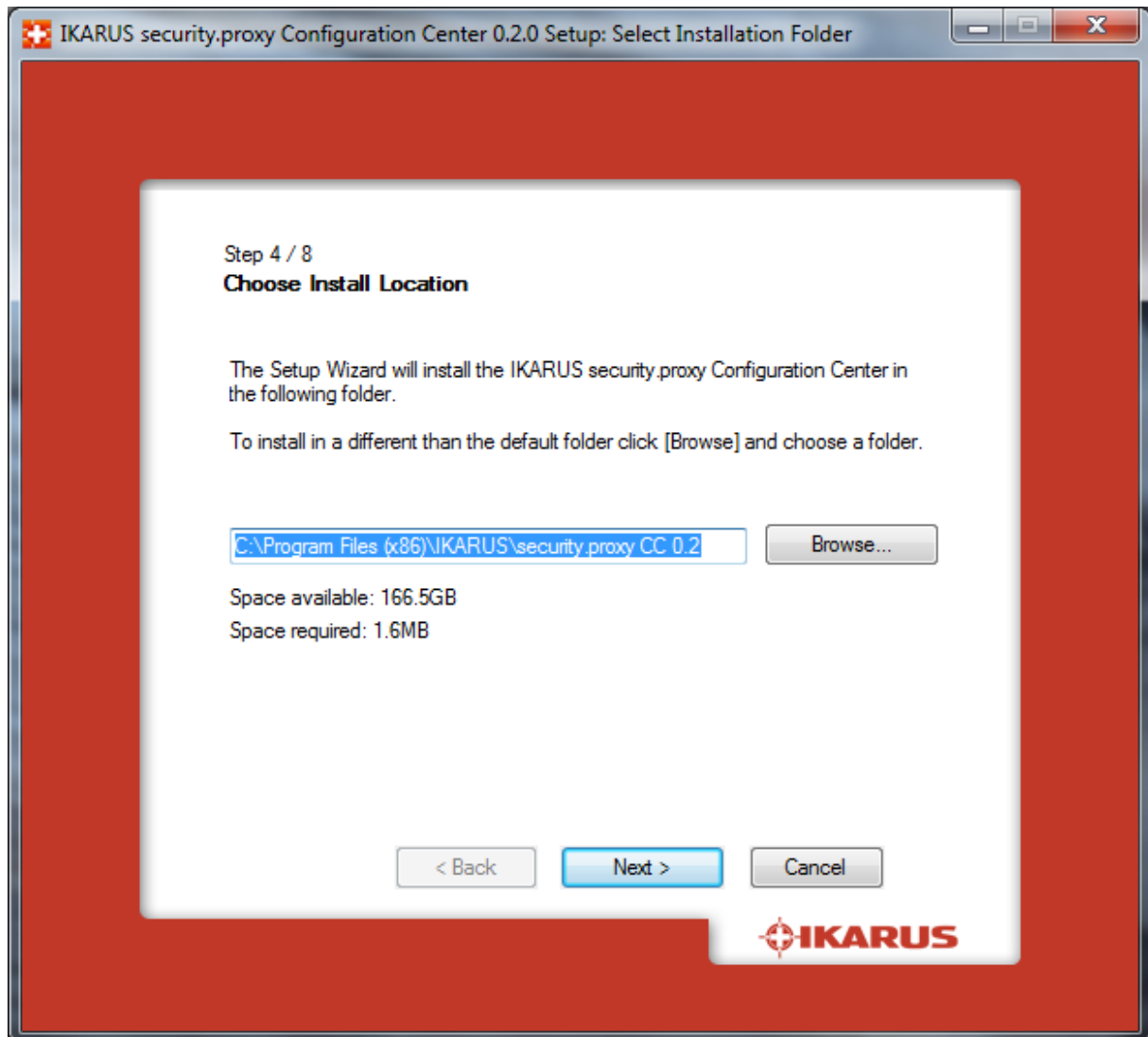
Image 11 – Installing of security.proxy CC Requirements



5.2.2.5 Step 4: Installation Directory

Select the **IKARUS security.proxy Configuration Center** installation directory by either using the default location or entering a different one. Click “Next”.

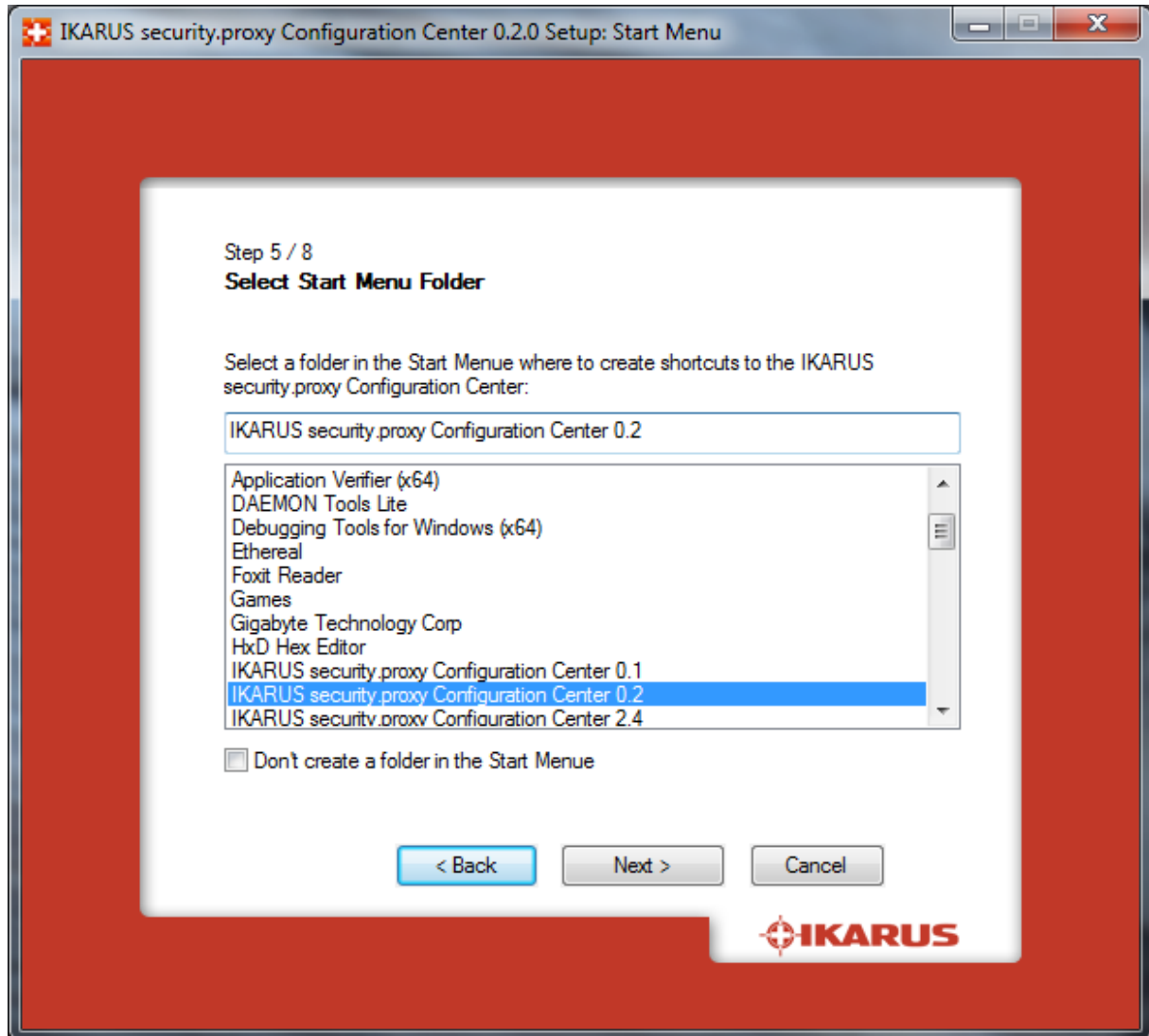
Image 12 – Installing of security.proxy CC Installation Directory



5.2.2.6 Step 5: Start menu

In this step, select whether a Start menu item will be created.

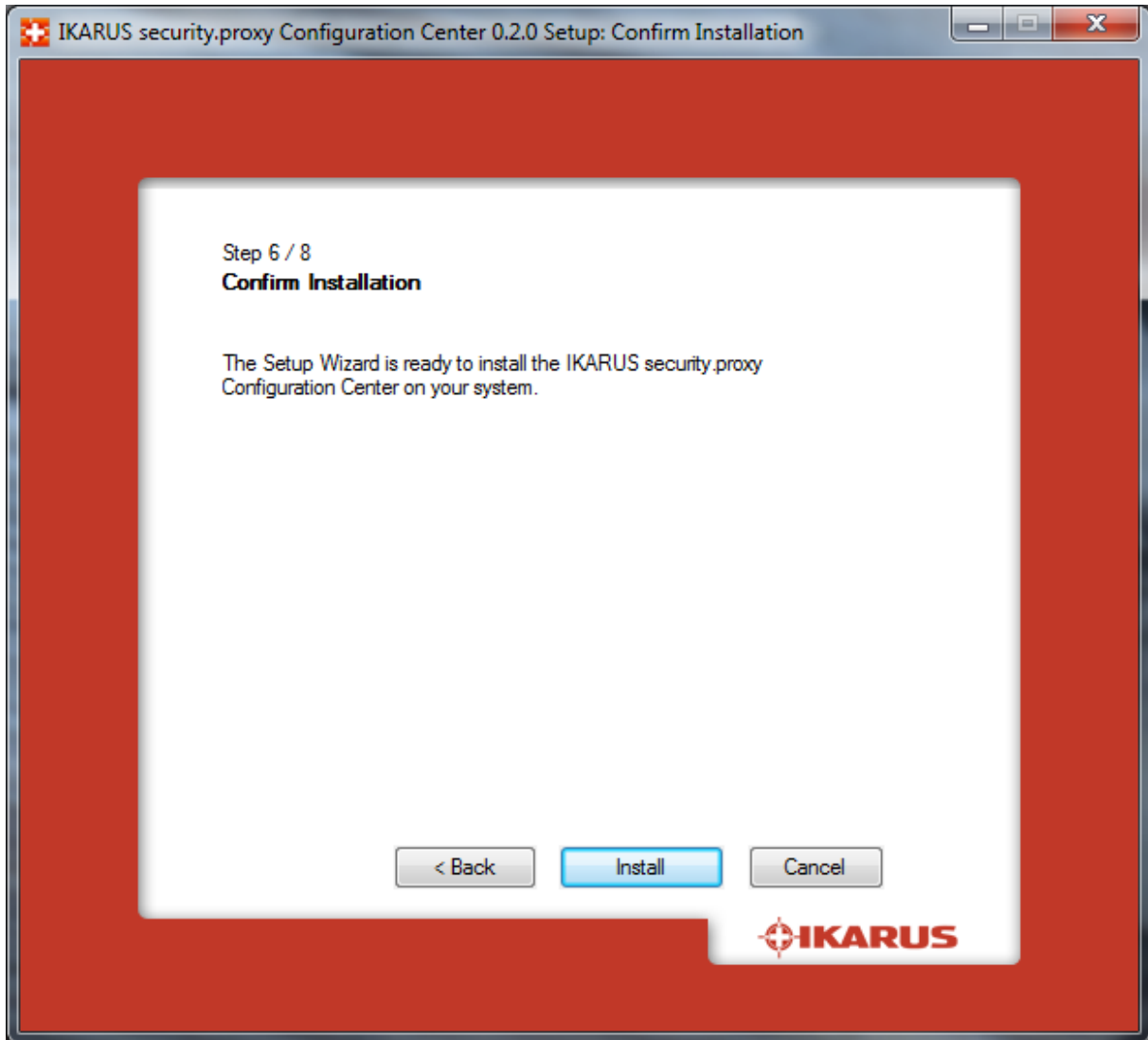
Image 13 – Installing of security.proxy CC Start menu



5.2.2.7 Step 6: Confirming the Installation

Click to run the actual **IKARUS security.proxy** installation process.

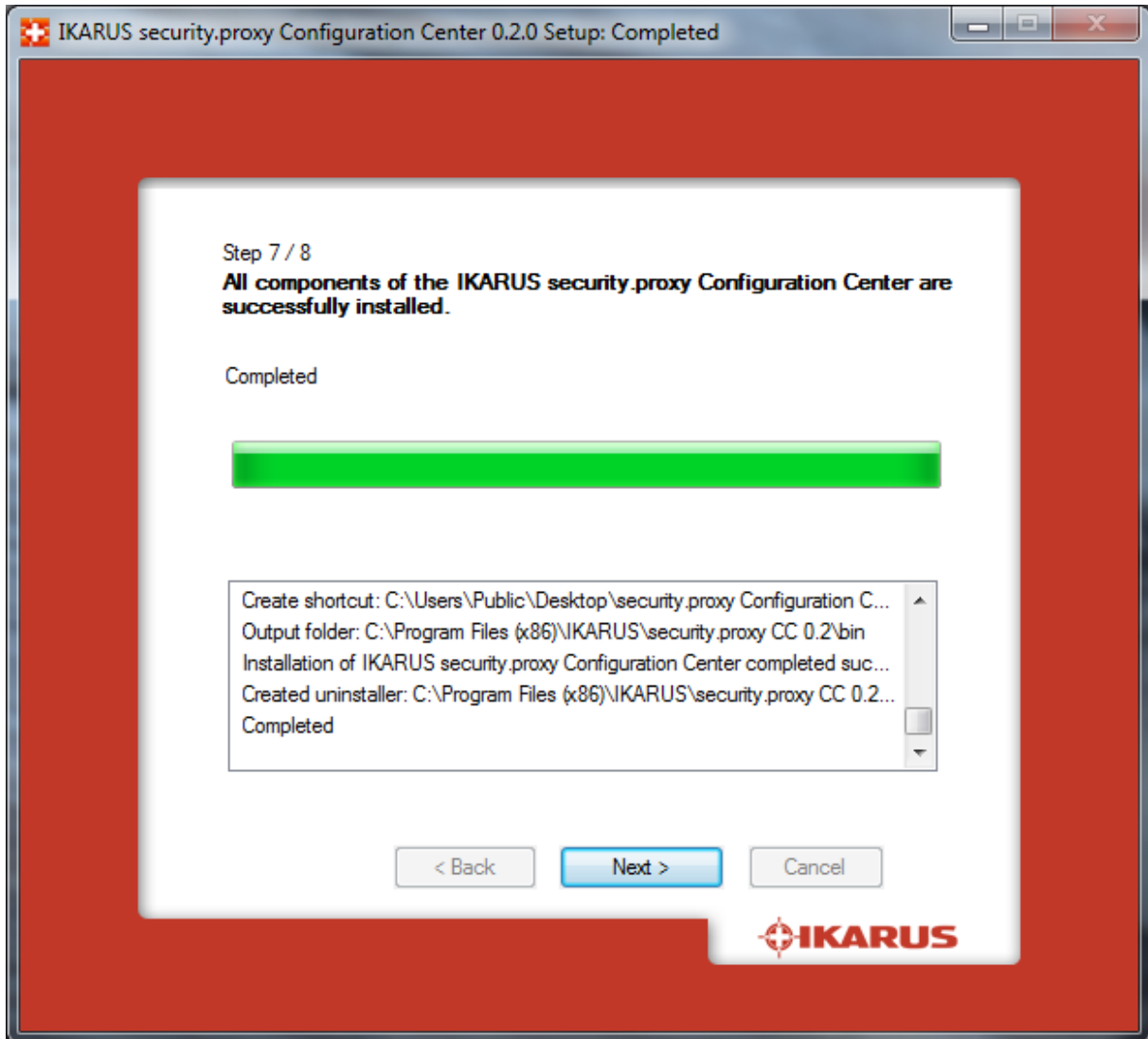
Image 14 – Installing of security.proxy CC Confirming the Installation



5.2.2.8 Step 7: Installation

Setup performs the **IKARUS security.proxy** installation. Setup will install all necessary files on your system. Click “Next”.

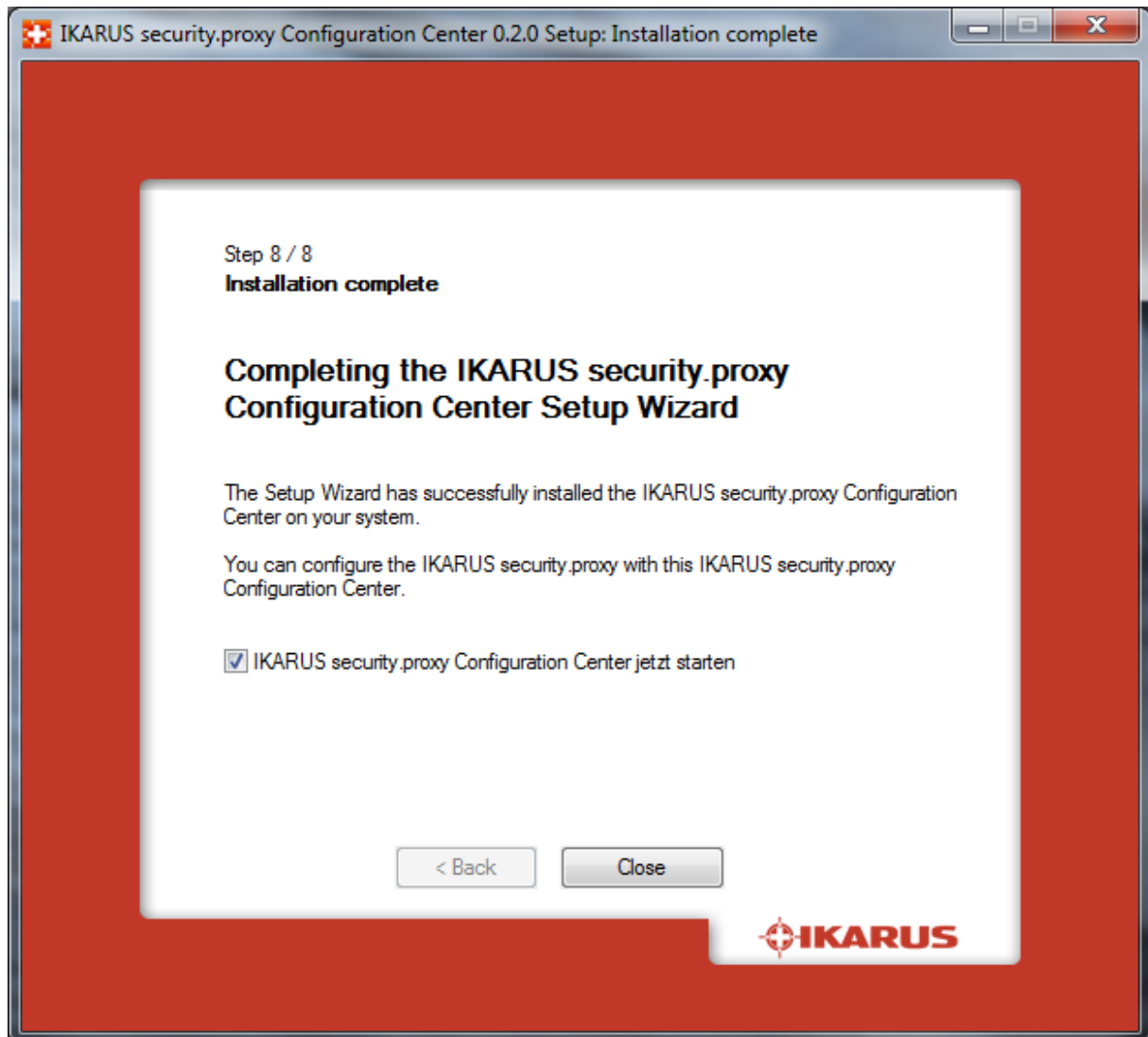
Image 15 – Installing of security.proxy CC Installation



5.2.2.9 Step 8: Done

The installation is complete. You can now use the **IKARUS security.proxy Configuration Center** for administering **IKARUS security.proxy**.

Image 16 – Installing of security.proxy CC Done



5.3 Installing on a Linux System

Installing **IKARUS security.proxy** on a Linux system is straightforward, too. Issue the following command (the sample shows the 64-bit command):

```
# rpm -ivh IKARUSSecurityProxy-3.9.0rh5.x86_64.rpm
```

This will install **IKARUS security.proxy** on your system.

5.4 Licensing

During the Windows installation process, the wizard will prompt you to add a license. On Linux systems, you can do this on the command line after the installation process has finished.

The following sample shows the command line on a 64-bit Linux system:

```
# cd /opt/securityproxy/bin  
# ./securityproxy_l64 -importlicense <licensefile>
```

5.5 Stopping and Starting the Service

5.5.1 On Microsoft Windows Systems

When the installation is complete, the list of services installed on the system will include the **IKARUS security.proxy** service. You can stop and restart it like any other service using the Administrative Tools.

5.5.2 On Linux

On a Linux system, the **IKARUS security.proxy** service will be registered in the appropriate run levels.

Stop and restart the service using a start script:

```
# /etc/init.d/securityproxy stop  
# /etc/init.d/securityproxy start
```

or

```
# /etc/init.d/securityproxy restart
```

5.6 Using IKARUS security.proxy

You can use **IKARUS security.proxy** immediately after installation.

The only requirement is to configure a proxy on your Web client (Microsoft Internet Explorer, Mozilla Firefox, Opera, etc.).

For that purpose, you need to enter the DNS name or IP address of your system and the appropriate TCP port (8080).